

FINNISH RESCUE SERVICES' POCKET STATISTICS 2004–2008

CONTENTS

1	INTRODUCTION	1
2	RESCUE SERVICE SYSTEM AND RESOURCES	2
3	ACCIDENT PREVENTION	6
4	RESCUE OPERATIONS	8
5	ACCIDENT DAMAGES	26
6	PREPAREDNESS	30

Further Inquiries:

Emergency Services College, Research Unit

Esa Kokki, Research Director

esa.kokki@pelastusopisto.fi

Pekka Tiittanen, Researcher

pekka.tiittanen@pelastusopisto.fi

Tiina Rimpiläinen, Translator

tiina.rimpilainen@pelastusopisto.fi

prontonet.fi

Emergency Services College Publication

D-series: Other

3/2009

ISBN: 978-952-5515-78-7 (pdf)

ISSN: 1795-9187

1 INTRODUCTION

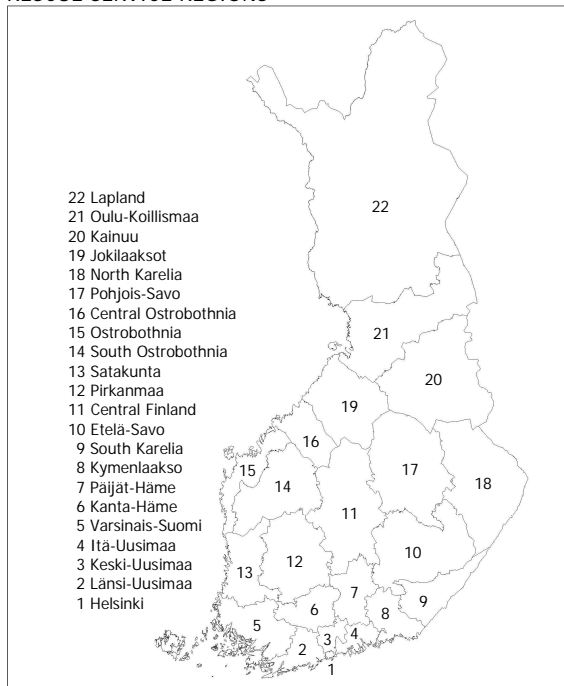
In Finland, the responsibility for the functions of rescue services is divided between 22 rescue service regions. The rescue services on the Åland Islands are regulated by regional legislation. The functions of rescue service regions include accident prevention, rescue operations and civil defence, etc.

The pocket statistics is based on the data in the rescue services resource and accident statistics program (PRONTO) from 2004–2008, unless indicated otherwise. PRONTO is maintained by the regional rescue departments. The data in the statistics were gathered directly from PRONTO without a nationwide check.

In the statistics rescue operations refer to those incidents when a fire brigade was alerted by an emergency response centre, excluding ambulance service. The data related to rescue operations have been tabulated in PRONTO based on the primary type of an emergency. The secondary types of emergencies have been counted into those tables which deal with accidents, causes for automatic fire calls and property damages. Separate missing data have not been included in the tables. All this should be taken into consideration when comparing the data presented in the tables.

2 RESCUE SERVICE SYSTEM AND RESOURCES

RESCUE SERVICE REGIONS



POPULATION SHARE OF RESCUE SERVICE REGIONS BY RISK AREA AND SURFACE AREA IN 2008

	Population	Risk Area (%)				Surface Area (km ²)	Land Area (km ²)
		I	II	III	IV		
Helsinki	576 632	81	11	2	7	716	213
Länsi-Uusimaa	419 359	32	44	13	11	7 855	4 242
Keski-Uusimaa	412 029	38	47	11	5	1 986	1 940
Itä-Uusimaa	93 491	13	33	28	27	5 537	2 736
Varsinais-Suomi	461 177	34	35	21	10	20 539	10 663
Kanta-Häme	173 041	17	41	21	21	5 706	5 200
Päijät-Häme	200 847	30	41	13	17	6 256	5 124
Kymenlaakso	182 754	32	35	16	17	7 417	5 113
South Karelia	134 448	12	45	21	22	7 236	5 615
Etelä-Savo	156 632	9	53	16	21	18 768	13 984
Central Finland	271 747	15	38	20	26	19 952	16 706
Pirkanmaa	480 705	24	45	15	16	14 471	12 444
Satakunta	227 652	11	46	23	21	11 636	7 957
South Ostrobothnia	193 511	2	37	28	33	14 001	13 445
Ostrobothnia	144 951	15	31	32	22	16 188	6 804
Central Ostrobothnia	102 063	13	37	27	23	9 116	6 215
Pohjois-Savo	248 423	20	36	14	30	20 368	16 771
North Karelia	166 129	12	40	19	29	21 584	17 764
Jokilaaksot	121 905	6	35	41	18	17 259	13 499
Kainuu	83 160	1	34	24	41	24 453	21 503
Oulu-Koillismaa	264 239	19	48	20	12	26 180	21 739
Lapland	183 963	2	18	20	59	100 368	92 663
Total	5 298 858	27	37	17	19	377 592	302 340

RESCUE SERVICE PERSONNEL

	2008
Ministry of the Interior, Department of Rescue ¹	49
Emergency Services College ²	130
State Provincial Offices, Department of Rescue ¹	42
Full-time Employees of Rescue Departments	5 351
Officers (Operational Personnel)	537
Sub-officers (Operational Personnel)	437
Firefighters (Operational Personnel)	2 940
Emergency Medical Services	760
Other Personnel	677
Contract Fire Brigade Personnel ³	19 400

AGE DISTRIBUTION OF FULL-TIME RESCUE SERVICE PERSONNEL (%)

	2004	2005	2006	2007	2008
Under 30 years	10	10	10	10	12
30-39 years	29	30	30	29	28
40-49 years	38	37	37	37	34
50-59 years	22	22	23	23	24
Over 60 years	1	1	1	1	2

NUMBER OF FIRE STATIONS

	2008
Fire Stations within Rescue Service Region	382
Contract Fire Brigades ³	561
Industrial and Institutional Fire Brigades	120

References: ¹ Ministry of the Interior, Department of Rescue, ² Emergency Services College, ³ Federation of Finnish Contract Fire Brigades.

RESCUE SERVICE VEHICLES

	2008
Rescue Service Vehicle	73
Control Unit	304
Fire Engine	1 102
Water Tender	572
Foam Tender	54
Dry Powder Appliance	4
Heavy Rescue Unit	20
Rescue Diving Appliance	27
Boom Ladder Truck	38
Ladder Unit	8
Hydraulic Platform Truck	40
Personnel Carrier	664
Repair Truck	30
Hazardous Materials Unit	6
Damage Control Tender	30
Hose Tender	14
Gear Truck	66
First Response Vehicle	35
Ambulance	612
Incident Command Unit	8
Fire Inspection Vehicle	220
Other Rescue Service Vehicle	121
Container, Container Truck	73
Other Vehicle	1 171

RESCUE SERVICES' FINANCIAL INFORMATION

	2004	2005	2006	2007
Revenue (MEUR)	52	32	40	19
Expenditure (MEUR)	292	311	319	329
Personnel Costs (MEUR)	200	210	217	222
Net Expenditure (MEUR)	240	279	279	310
Investments (MEUR)	23	16	19	20
Net Expenditure (€/Inhabitant)	46	54	53	59
Investments (€/Inhabitant)	5	3	4	4

3 ACCIDENT PREVENTION

EDUCATION, ADVICE AND TRAINING

	2005	2006	2007	2008
Events	10 272	10 263	12 004	12 997
Participants	507 731	690 740	765 691	1 051 715
Share of Population (%)	10	13	15	20

FIRE INSPECTIONS AND OTHER INSPECTIONS

	2004	2005	2006	2007	2008
Annually Inspected	33 561	34 004	33 519	34 849	36 935
Hospitals, Healthcare Buildings	2 833	3 203	3 291	3 719	3 792
Accommodation Facilities and Areas	2 658	2 721	2 625	2 867	2 991
Assembly and Commercial Buildings	13 455	15 807	15 545	16 120	17 162
Large Production, Warehouse and Agricultural Facilities	6 109	6 494	6 364	6 353	7 123
Handling Sites of Flammable Chemicals	1 686	1 784	1 832	1 976	2 139
Premises Equipped with Automatic Fire Alarm System	3 303	2 469	2 244	2 237	2 269
Other Annually Inspected Premises	3 517	1 526	1 618	1 577	1 459
Residential Buildings	96 958	95 168	88 309	90 143	85 388
Other Fire Inspections	11	12 123	12 235	12 399	12 286
Other Inspections	27 210	29 910	23 555	23 666	30 372

SHARE OF PERFORMED FIRE INSPECTIONS FROM SCHEDULED INSPECTIONS (%)

	2004	2005	2006	2007	2008
Hospitals, Healthcare Buildings	93	94	93	98	95
Accommodation Facilities and Areas	94	87	92	94	95
Assembly and Commercial Buildings	80	82	88	87	90
Large Production, Warehouse and Agricultural Facilities	80	85	89	87	94
Handling Sites of Flammable Chemicals	92	93	92	92	96
Premises Equipped with Automatic Fire Alarm System	88	83	89	88	89
Other Annually Inspected Premises	83	95	100	94	88
Residential Buildings	56	62	63	61	60

4 RESCUE OPERATIONS

RESCUE OPERATIONS BY TYPE

	2004	2005	2006	2007	2008
Fires	11 718	12 977	17 580	14 156	14 644
Structural Fire	3 315	3 671	3 998	4 025	4 485
Vehicle Fire	2 598	2 630	2 725	2 549	2 379
Wildfire	2 198	2 631	6 290	2 813	3 161
Other Fire	3 607	4 045	4 567	4 769	4 619
Other Accidents	13 193	16 935	15 287	17 951	18 531
Traffic Accident	8 397	10 205	10 912	12 874	13 401
Oil Spill	2 188	2 496	2 229	2 519	2 504
Hazardous Material Accident	217	225	260	217	277
Natural Hazard	2 374	3 975	1 859	2 309	2 308
Explosion, Risk of Explosion	17	34	23	24	25
Collapse, Risk of Collapse	-	-	4	8	16
Other Operations	57 819	64 187	71 196	72 036	68 308
Fire Alarm System or Smoke Alarm Check or Inspection	18 923	21 236	22 891	23 106	21 889
Other Check or Inspection	8 907	7 383	8 336	8 307	8 370
First Response	20 036	24 234	27 767	28 081	25 579
Human Rescue	1 946	2 003	1 964	2 174	2 150
Animal Rescue	1 438	1 780	1 894	1 939	2 051
Other Rescue Operation	714	681	533	509	-
Loss Prevention	2 571	3 741	4 506	4 474	4 600
Assistance	2 734	2 581	2 754	2 961	3 073
Executive Assistance	550	548	551	485	596
Total	82 730	94 099	104 063	104 143	101 483

RESCUE OPERATIONS BY RESCUE SERVICE REGION

	2004	2005	2006	2007	2008
Helsinki	7 124	7 703	8 637	9 152	8 567
Länsi-Uusimaa	6 272	6 871	7 694	7 814	7 707
Keski-Uusimaa	5 536	5 434	5 896	7 020	7 353
Itä-Uusimaa	1 773	1 951	2 374	2 363	2 265
Varsinais-Suomi	6 062	7 304	7 869	8 325	8 548
Kanta-Häme	3 017	3 135	3 158	3 309	3 211
Päijät-Häme	2 711	3 420	3 751	3 880	3 851
Kymenlaakso	3 721	4 141	4 222	4 225	3 921
South Karelia	2 296	2 518	2 886	2 751	2 699
Etelä-Savo	3 160	3 759	4 376	3 693	3 697
Central Finland	4 398	4 721	5 450	5 608	5 498
Pirkanmaa	6 961	10 257	11 310	10 363	9 329
Satakunta	3 894	4 288	4 549	5 011	4 870
South Ostrobothnia	3 964	4 267	4 515	4 466	4 404
Ostrobothnia	2 760	2 675	2 944	2 842	2 883
Central Ostrobothnia	1 943	1 981	2 294	2 305	2 221
Pohjois-Savo	4 257	5 236	5 337	4 855	4 895
North Karelia	3 397	3 773	3 788	3 380	3 537
Jokilaaksot	2 288	2 399	2 681	2 655	2 640
Kainuu	1 153	1 386	2 017	1 952	1 690
Oulu-Koillismaa	2 913	3 148	4 482	4 208	3 647
Lapland	3 130	3 732	3 832	3 966	4 049
Total	82 730	94 099	104 063	104 143	101 483
Joint Operations	539	599	810	820	1 150

SHARE OF RESCUE OPERATIONS BY RISK AREA (%)

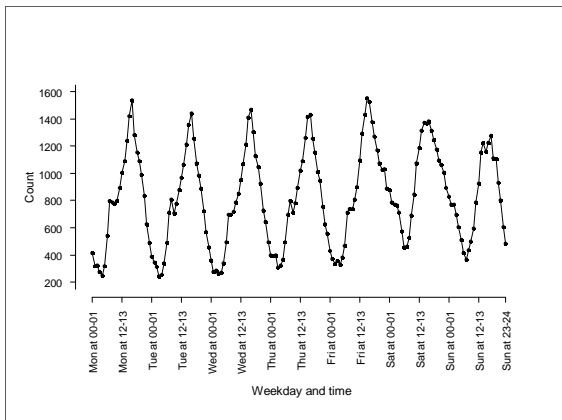
	2004	2005	2006	2007	2008
Risk Area I	28	26	25	25	25
Risk Area II	35	30	26	26	27
Risk Area III	20	19	17	16	16
Risk Area IV	18	26	31	33	33

URGENT OPERATIONS¹ BY MONTH

	2004	2005	2006	2007	2008
January	1 723	1 821	1 886	2 282	2 327
February	1 477	1 448	1 742	1 829	2 027
March	1 295	1 642	1 778	1 978	2 048
April	2 187	2 286	2 080	2 783	2 412
May	2 605	2 493	3 170	2 842	3 790
June	2 236	2 435	3 114	3 473	3 400
July	2 015	3 049	4 299	2 455	2 837
August	1 866	2 136	3 798	2 823	2 516
September	1 616	2 094	2 548	2 184	2 303
October	1 753	2 089	2 206	2 092	2 204
November	1 608	1 830	1 937	2 184	2 235
December	1 914	2 121	2 185	2 528	2 414

¹Urgent Operations = Fires, Traffic Accident, Hazardous Material Accident, Explosion or Risk of Explosion, Collapse or Risk of Collapse and Human Rescue.

URGENT OPERATIONS BY WEEKDAY AND TIME



STRUCTURAL FIRES BY BUILDING TYPE

	2004	2005	2006	2007	2008
Residential Building	1 486	1 739	1 823	1 869	2 240
Free-time Residence	164	148	192	179	174
Commercial Building	120	164	151	182	199
Office Building	30	52	38	40	63
Transport and Communications Building	51	59	74	73	50
Institutional and Healthcare Building	71	85	77	95	106
Assembly Building	29	46	64	55	68
Educational Building	47	55	59	59	60
Industrial Building	391	390	453	498	503
Warehouse	208	217	257	243	242
Building for Fire and Rescue Services	0	3	4	3	3
Agricultural Building	144	179	199	176	179
Other Building	475	563	618	594	622
Sauna	284	331	333	290	288
Total	3 216	3 700	4 009	4 066	4 509

CAUSE OF STRUCTURAL FIRE

	2004	2005	2006	2007	2008
Human Activity	1 443	1 637	1 674	1 807	2 222
Machine or Device Failure	756	797	967	997	977
Natural Phenomena	119	76	107	90	108
Flammable Substance	41	30	33	56	47
Animal	12	16	10	15	13
Other Cause	489	574	605	584	632
Cause Unknown	538	584	646	524	512

STRUCTURAL FIRE CAUSE OF IGNITION

	2004	2005	2006	2007	2008
Open Fire	736	834	785	910	997
Match, Other Firemaking Device	269	349	295	383	458
Cigarette, Other Tobacco Product	169	198	195	201	253
Hot Work	102	111	97	121	110
Candle, Tealight, Outdoor Candle	95	73	78	107	71
Firework, Pyrotechnic Products	17	19	22	30	30
Fireplace, Flue	490	546	625	632	674
Chimney Fire	133	141	185	207	287
Electrical Device, Other Electrical Cause	498	528	591	602	640
Overheating, Spark	533	566	693	666	770
Frictional Heat, Spontaneous Ignition, Explosion	60	64	65	79	95
Natural Phenomena	120	81	109	95	96
Other Known Cause	360	439	456	493	669
Cause Unknown	600	654	712	595	570

INTENTIONALITY OF STRUCTURAL FIRE

	2004	2005	2006	2007	2008
Intentional	251	324	298	365	469
Negligence, Carelessness	361	436	528	532	674
Accidental, Unintentional	611	607	605	677	848
Unknown	219	268	243	233	231
Total	1 442	1 635	1 674	1 807	2 222

USE OF FIRST EXTINGUISHING IN STRUCTURAL FIRES

	2004	2005	2006	2007	2008
Used	1 347	1 428	1 572	1 585	1 693
Not Used	2 035	2 030	2 137	2 145	2 301
Unknown	16	257	333	343	517

EFFECT OF FIRST EXTINGUISHING IN STRUCTURAL FIRES

	2004	2005	2006	2007	2008
Extinguished Fire	557	599	682	766	850
Limited Fire	576	587	666	587	622
No Effect	202	231	219	224	217
Extinguisher Did Not Work	12	11	5	8	4

SMOKE ALARM ACTIVATION IN RESIDENTIAL BUILDING FIRES

	2004	2005	2006	2007	2008
Smoke Alarm Activated	446	509	558	600	719
Smoke Alarm Did Not Activate	170	181	205	170	266
Smoke Alarm Activation Unknown	376	434	488	478	515
No Smoke Alarm	932	1 121	1 161	1 144	1 255

WILDFIRES

	2004	2005	2006	2007	2008
Forest Fire	782	1 031	2 963	1 155	1 412
Other Wildfire	1 488	1 666	3 443	1 763	1 828
Total	2 270	2 697	6 406	2 918	3 240

CAUSE OF WILDIRE

	2004	2005	2006	2007	2008
Human Activity	1 643	1 766	3 807	1 834	2 207
Natural Phenomena	124	230	763	298	155
Machine or Device Failure	47	63	135	58	73
Animal	13	13	29	10	21
Flammable Substance	2	2	17	5	6
Other Cause	74	161	407	159	123
Cause Unknown	367	461	1 248	554	655

WILDFIRE CAUSE OF IGNITION

	2004	2005	2006	2007	2008
Open Fire	1 497	1 669	3 457	1 708	2 054
Campfire, Grill	324	469	1 082	437	531
Match, Other Firemaking Device	406	364	800	465	581
Rubbish Burning	357	330	531	353	324
Cigarette, Other Tobacco Product	170	201	703	241	354
Prescribed Burning	211	288	278	170	213
Natural Phenomena	110	170	576	125	136
Overheating, Spark	92	158	462	145	199
Frictional Heat, Spontaneous Ignition, Explosion	28	68	255	149	53
Electrical Device, Electrical Cause	52	82	142	163	84
Fireplace, Flue	12	13	33	13	13
Other Known Cause	73	93	305	97	95
Cause Unknown	404	442	1 175	518	605

INTENTIONALITY OF WILDFIRE

	2004	2005	2006	2007	2008
Intentional	301	311	572	347	433
Negligence, Carelessness	528	576	1 555	700	873
Accidental, Unintentional	505	567	887	455	507
Unknown	309	311	793	332	394
Total	1 643	1 765	3 807	1 834	2 207

VEHICLE FIRES BY VEHICLE TYPE

	2004	2005	2006	2007	2008
Road Vehicles	2 604	2 626	2 695	2 512	2 365
Water Vehicles	19	22	34	42	39
Rail Vehicles	1	9	6	16	10
Air Vehicles	1	1	3	1	2
Other Vehicles	27	20	27	22	25
Total	2 652	2 678	2 765	2 593	2 441

CAUSE OF VEHICLE FIRE

	2004	2005	2006	2007	2008
Machine or Device Failure	1 303	1 338	1 469	1 308	1 299
Human Activity	598	626	525	558	546
Flammable Substance	23	26	30	24	17
Natural Phenomena	4	7	2	7	5
Animal	1	0	2	1	0
Other Cause	131	133	156	138	130
Cause Unknown	595	550	581	557	444

INTENTIONALITY OF VEHICLE FIRES

	2004	2005	2006	2007	2008
Intentional	412	422	337	383	375
Negligence, Carelessness	44	59	55	58	48
Accidental, Unintentional	78	68	73	60	68
Unknown	64	77	60	57	55
Total	598	626	525	558	546

ROAD VEHICLE FIRES

	2004	2005	2006	2007	2008
Passenger Car	1 951	1 825	1 816	1 669	1 456
Van	138	156	154	136	165
Combination of Vehicles	92	86	149	137	126
Lorry	95	112	126	111	127
Engine-powered Work Vehicle	87	132	119	115	112
Tractor	96	117	110	101	93
Bus	50	69	60	75	76
Motor Caravan, Caravan	26	46	49	42	51
Moped	16	28	38	43	77
Off-road Vehicle	10	10	19	16	25
Trailer	6	11	22	21	18
Tank Truck	15	19	11	11	10
Motorcycle	8	7	14	19	13
Restricted Motorcycle	2	1	2	4	3
Other Road Vehicle	12	7	6	12	13

CAUSE OF OTHER FIRE

	2004	2005	2006	2007	2008
Human Activity	2 130	2 369	2 744	3 141	3 345
Machine or Device Failure	556	573	583	555	476
Natural Phenomena	105	113	171	141	125
Flammable Substance	37	38	35	34	34
Animal	21	19	14	13	14
Other Cause	427	512	517	438	293
Cause Unknown	421	456	549	488	382
Total	3 697	4 080	4 613	4 810	4 669

OTHER FIRE CAUSE OF IGNITION

	2004	2005	2006	2007	2008
Open Fire	1 629	1 805	2 169	2 534	2 786
Match, Other Firemaking Device	871	950	954	1 291	1 517
Campfire, Grill	218	244	413	364	413
Cigarette, Other Tobacco Product	210	239	317	307	334
Rubbish Burning	136	195	265	264	187
Firework, Pyrotechnic Products	80	73	115	195	238
Electrical Device, Electrical Cause	372	382	404	429	353
Overheating, Spark	337	379	425	408	355
Fireplace, Flue	276	341	301	195	62
Chimney Fire	233	292	250	145	18
Frictional Heat, Spontaneous Ignition, Explosion	114	116	177	146	141
Natural Phenomena	67	67	101	90	70
Other Known Cause	362	399	384	414	337
Cause Unknown	538	590	652	594	565

INTENTIONALITY OF OTHER FIRE

	2004	2005	2006	2007	2008
Intentional	1 014	1 129	1 279	1 625	1 904
Negligence, Carelessness	375	426	557	616	606
Accidental, Unintentional	373	412	443	403	378
Unknown	368	401	465	497	457
Total	2 130	2 368	2 744	3 141	3 345

TRAFFIC ACCIDENTS

	2004	2005	2006	2007	2008
Road Traffic	8 033	9 739	10 443	12 482	13 047
Rail Transport	146	176	183	183	163
Level Crossing Accident	90	106	109	90	69
Waterway Transport	24	34	29	41	52
Air Traffic	22	21	22	31	21
Other Traffic	249	301	310	201	211
Total	8 474	10 271	10 987	12 938	13 494

NATURAL HAZARDS

	2004	2005	2006	2007	2008
Storm	1 540	3 499	1 601	1 850	2 133
Flood	711	249	83	281	65
Landslide	11	11	2	10	6
Frost	4	11	9	2	5
Other Natural Hazard	212	324	245	241	180
Total	2 478	4 094	1 940	2 384	2 389

OIL SPILLS

	2004	2005	2006	2007	2008
Overfill	240	262	237	251	239
Tank Leak	141	138	136	145	144
Other Leak in Storing or Dispensing Device	76	75	82	80	90
Tank Transport	60	46	52	53	53
Road Vehicle	887	1 096	994	1 150	1 228
Rail Vehicle	11	11	4	4	9
Water Vehicle	56	65	59	58	66
Other Vehicle	262	293	250	267	286
Other Machine or Device	77	93	75	90	115
Treatment of Waste Oil or Used Oil	54	54	43	54	36
Unknown Oil Spill in Water Body or Sewer	57	58	57	48	56
Other Cause or Accident	409	438	355	475	428
Total	2 330	2 629	2 344	2 675	2 750

HAZARDOUS MATERIAL ACCIDENT SITE

	2004	2005	2006	2007	2008
Industrial Plant	50	57	51	50	45
Warehouse, Warehouse Area	49	47	58	36	48
Street, Other Urban Area	33	22	29	23	46
Highway	11	14	24	11	24
Shop, Outlet	22	24	28	21	36
Public Building	10	20	15	19	13
Accommodation or Restaurant Premises	7	4	8	7	15
Residential Building	20	8	15	21	10
Other Building	9	13	14	13	12
Port, Water Body	11	5	7	4	10
Yard, Railway	7	7	9	4	14
Other Site	13	15	19	22	20
Total	242	236	277	231	293

ADR CLASSIFICATION OF HAZARDOUS MATERIAL ACCIDENTS

	2004	2005	2006	2007	2008
Explosives	0	1	1	0	1
Gases	8	13	91	85	95
Flammable Liquids	33	30	66	64	116
Flammable Solids	2	1	9	2	5
Oxidising Substances, Organic Peroxides	5	4	9	9	7
Toxic and Infectious Substances	15	10	11	16	12
Radioactive Substances	1	0	0	0	0
Corrosive Substances	23	31	52	55	53
Other Hazardous Material or Goods	0	0	15	14	14
No Data	162	150	35	1	1

CHECKS AND INSPECTIONS

	2004	2005	2006	2007	2008
Fire Alarm System or Smoke Alarm Check or Inspection	18 923	21 236	22 891	-	-
Automatic Fire Alarm System Check or Inspection	-	-	-	21 266	20 056
Smoke Alarm Check or Inspection	-	-	-	1 840	1 833
Other Check or Inspection	8 907	7 383	8 336	8 307	8 370

CAUSE FOR AUTOMATIC FIRE ALARM

	2004	2005	2006	2007	2008
Negligence in Property Repair, Installation or Maintenance Work	1 823	2 247	2 417	2 523	2 530
Exhaust Gas	203	207	200	205	186
Smoking	355	422	413	370	327
Cooking	-	-	-	2 751	3 042
Other Smoke or Dust	3 979	4 916	5 456	3 470	3 069
Temporary High Temperature, Fire	453	453	516	413	568
Moisture or Water	1 820	1 750	1 984	2 023	1 808
Sensor Failure in Fire Alarm or Fixed Fire Extinguishing System	797	821	887	797	611
Sprinkler System Failure	681	797	987	1 035	983
Other System Failure	319	324	348	444	408
Overvoltage	279	209	223	322	197
Impact on Sensor	122	140	189	194	274
Error or Misuse	338	448	423	558	596
Malicious Use	326	357	356	436	447
Other Cause or Cause Unknown	4 291	4 974	5 557	5 674	5 153
No Data	3 168	3 284	3 060	2 068	1 985

HUMAN RESCUE OPERATIONS

	2004	2005	2006	2007	2008
Water Rescue	387	440	462	475	450
Rescue from Trap, Shaft, Collapse, Well	70	85	61	57	57
Rescue from Other Dangerous Place or Situation	276	286	285	289	262
Rescue from Place or Situation With No Immediate Danger	459	504	547	416	419
Rescue from Terrain	203	217	221	272	283
Lift Rescue	-	-	-	402	426
Other Rescue Operation	551	471	388	263	253

ANIMAL RESCUE OPERATIONS

	2004	2005	2006	2007	2008
Water Rescue	123	175	165	168	163
Rescue from Trap, Shaft, Collapse, Well	235	217	249	229	207
Rescue from Other Dangerous Place or Situation	165	210	263	260	324
Rescue from Place or Situation With No Immediate Danger	561	705	657	720	761
Rescue from Terrain	68	90	86	87	62
Lift Rescue	-	-	-	8	5
Other Rescue Operations	285	383	474	467	529

LOSS PREVENTION OPERATIONS

	2004	2005	2006	2007	2008
Hazard Caused by Natural or Meteorological Phenomenon	766	1 750	1 716	1 725	2 153
Failure in Water Distribution System	443	429	687	633	434
Loss Prevention Operation Caused by Other Technical Reason	334	350	435	381	363
Loss Prevention Operation Caused by Human Activity	444	596	686	695	596
Accident Site Clean-up	-	-	-	284	289
Other Loss Prevention Operation	584	616	982	756	765

5 ACCIDENT DAMAGES

DEATHS

	2004	2005	2006	2007	2008
Structural Fire	85	73	111	78	111
Wildfire	0	0	2	1	0
Vehicle Fire	6	2	3	4	4
Other Fire	3	1	2	1	3
Traffic Accident	338	354	297	383	323
Oil Spill	1	1	0	1	0
Hazardous Material Accident	0	1	0	0	1
Natural Hazard	1	0	0	0	0
Explosion, Risk of Explosion	3	1	1	1	1
Collapse, Risk of Collapse	-	-	0	0	0
Fire Alarm System or Smoke Alarm Check or Inspection	2	0	1	0	0
Other Check or Inspection	8	4	5	6	5
Human Rescue	181	183	152	154	128
Animal Rescue	0	0	0	0	0
Other Rescue Operation	12	15	12	10	-
Loss Prevention	0	0	0	1	0
Assistance	51	53	43	45	53
Executive Assistance	60	54	50	59	56
Total	751	742	679	744	685

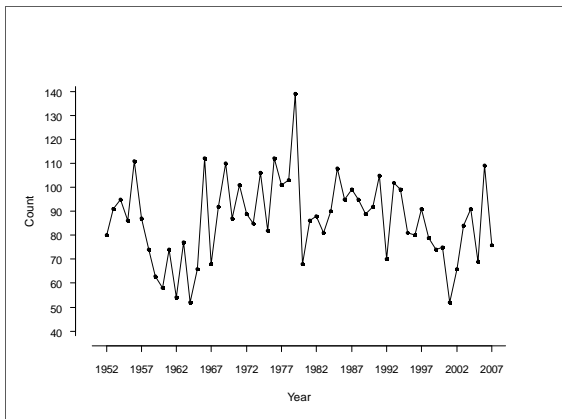
INJURED

	2004	2005	2006	2007	2008
Structural Fire	249	422	371	487	491
Wildfire	3	4	15	7	4
Vehicle Fire	20	30	31	33	122
Other Fire	26	48	42	37	44
Traffic Accident	5 816	8 469	8 617	9 161	9 612
Oil Spill	5	5	7	3	8
Hazardous Material Accident	16	19	47	43	40
Natural Hazard	2	11	2	0	2
Explosion, Risk of Explosion	16	20	14	3	3
Collapse, Risk of Collapse	-	-	0	0	0
Fire Alarm System or Smoke Alarm Check or Inspection	17	20	35	27	26
Other Check or Inspection	31	50	50	31	68
Human Rescue	300	523	459	544	528
Animal Rescue	1	3	2	1	0
Other Rescue Operation	21	38	26	29	-
Loss Prevention	7	11	17	24	30
Assistance	81	166	127	143	181
Executive Assistance	31	10	15	34	39
Total	6 642	9 849	9 877	10 590	11 198

FIRE DEATHS

	2004 ⁴	2005 ⁴	2006 ⁴	2007 ⁴	2008
Fire Deaths	108	88	126	91	107
Accidental Cause of Death	91	69	109	76	93
Non-accidental Cause of Death	17	19	17	15	14
Deaths per Million Inhabitants	21	17	24	17	20

ACCIDENTAL FIRE DEATHS DURING 1952–2007^{4,5}



References: ⁴ Statistics Finland, ⁵ Peltola-Lampi T. (1996), Tapaturmatilanne vuonna 1996.

TOTAL PROPERTY DAMAGES* FROM FIRES

	2004	2005	2006	2007	2008
Floor Area in Structural Fires (m ²)	-	-	71 436	68 923	83 681
Damage to Building and Furnishings in Structural Fires (MEUR)	115	150	244	188	188
Property in Danger in Structural Fires (MEUR)	6 460	9 198	10 792	15 339	17 027
Burnt Land Area (ha)	735	1 068	7 207	841	1 188
Burnt Forest Area (ha)	358	495	1 617	576	830
Vehicle Fire (MEUR)	22	16	19	17	16
Other Fire (MEUR)	8	8	7	9	19

AVERAGE PROPERTY DAMAGES* FROM FIRES

	2004	2005	2006	2007	2008
Floor Area in Structural Fires (m ²)	-	-	37	35	36
Damage to Building and Furnishings in Structural Fires (€)	33 740	40 489	60 404	46 224	41 886
Burnt Land Area (ha)	0,32	0,39	1,13	0,29	0,37
Burnt Forest Area (ha)	0,43	0,46	0,53	0,48	0,57
Vehicle Fire (€)	8 424	6 200	6 910	6 754	6 633
Other Fire (€)	2 075	1 908	1 571	1 776	4 072

*Since 2006 calculation shown in € done using Haahtela Price Index (Haahtela-kehitys Oy).

6 PREPAREDNESS

AVERAGE RESPONSE TIME (IN MINUTES) OF FIRE BRIGADE IN URGENT OPERATIONS WITH STRENGTH 1+3

	2004	2005	2006	2007	2008
Risk Area I	7:10	7:38	7:45	7:16	6:25
Risk Area II	8:13	8:00	7:58	7:43	7:08
Risk Area III	11:15	10:45	10:24	9:33	9:27
Risk Area IV	16:20	15:21	15:58	14:13	14:18

SHARE OF REACHED TARGETS IN REQUIRED RESPONSE TIME IN URGENT OPERATIONS WITH STRENGTH 1+3 (%)

	2004	2005	2006	2007	2008
Risk Area I (6 min)	49	50	48	53	59
Risk Area II (10 min)	78	80	80	82	87
Risk Area III (20 min)	92	93	93	95	96
Risk Area IV (No Response Time Set)					

OPERATIONS IN WHICH STRENGTH 1+3 REACHED (%)

	2004	2005	2006	2007	2008
Structural Fire	96	96	96	96	96
Wildfire	88	87	88	89	93
Vehicle Fire	87	89	88	91	91
Other Fire	87	86	88	88	92
Traffic Accident	91	90	90	90	91
Oil Spill	67	70	69	70	72
Hazardous Material Accident	85	87	91	90	94
Natural Hazard	71	77	74	74	81
Explosion, Risk of Explosion	82	88	90	91	96
Collapse, Risk of Collapse	-	-	75	75	94
Fire Alarm System or Smoke Alarm Check or Inspection	91	90	91	91	93
Other Check or Inspection	78	77	78	80	85
Human Rescue	75	80	79	85	84
Animal Rescue	68	67	56	49	67
Other Rescue Operation	70	73	76	71	-
Loss Prevention	69	68	71	74	77
Assistance	50	56	63	71	72
Executive Assistance	61	62	64	69	68
Total	84	84	85	86	89